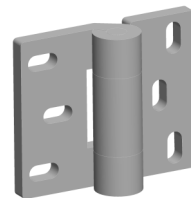
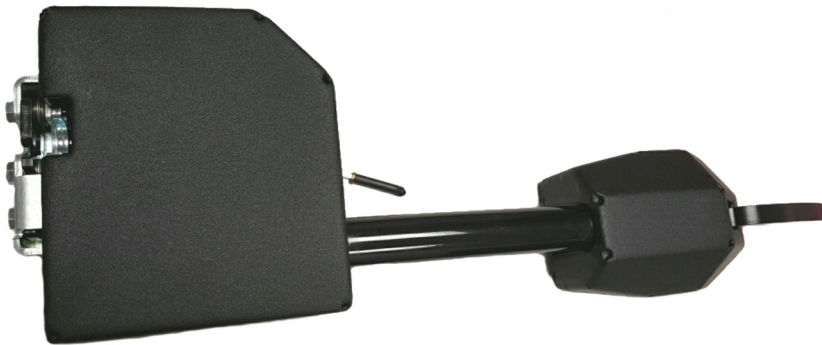


TriMark[®]

DOOR SYSTEMS
Access to Excellence



TRIMARK'S LINE OF



TriGuard
PRODUCTS

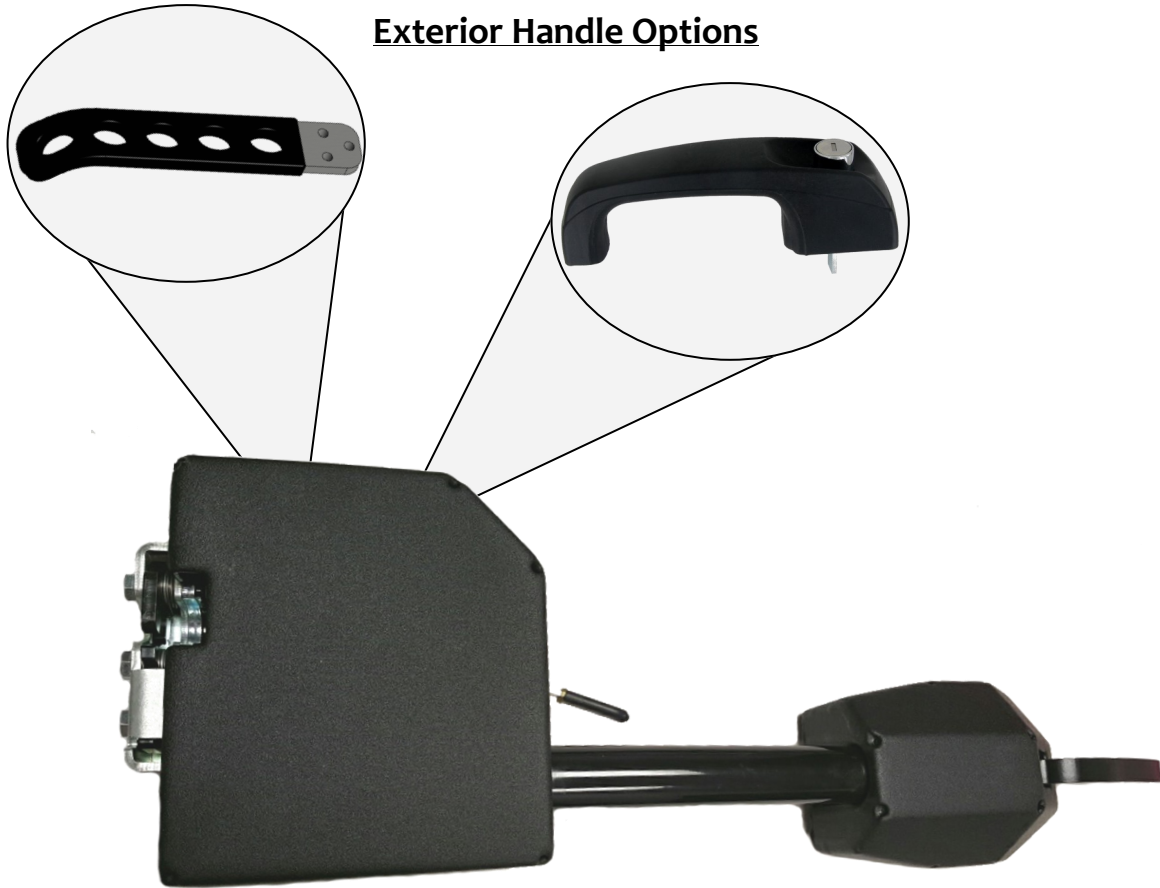
All products can be purchased separately or as a complete one-piece module ready for installation. System kits are available and can include TriGuard line of heavy duty latches, linkages, handles and door modules that are specifically developed for heavy duty armored vehicle applications to provide a comprehensive access solution.

Complete Door Systems

100-5020 TriGuard Heavy Duty Door Module - V2

This heavy duty, pre-engineered door module was updated to provide expanded functionality. Providing automotive-like functionality in a low profile, easy to install one-piece module, it is now available with either an exterior push button or a rotating lever handle and a second remote latch. Featuring TriMark's 050-1600 Heavy Duty Latch, it allows power locking and is compliant to FMVSS 206 (ECE R11) strength requirements.

Exterior Handle Options



100-5200 COMMANDDoor and COMMANDDoor Plus

COMMANDDoor and *COMMANDDoor Plus* is a complete power assist module that can simply and safely open and close the heaviest of armored vehicle doors with one intuitive motion and can be custom engineered to fit virtually any vehicle. The door fully integrates mechanical blast locks and a primary FMVSS 206 (ECE R11) latch with a power-assist actuation and control system to open and close the door for those vehicles with very heavy doors. The inside control *COMMAND Handle's* unique 2-axis electromechanical design allows for simple and intuitive hand motions by the soldier to activate the open and close action of the door.

Latches/Locks



050-0850 TriGuard Heavy Duty Latch Module With Slam Cam Option

This heavy duty latch module is designed for medium to heavy-duty entrance and rear door applications. It features a proven single rotor latch design and high strength 8 gauge (4.2mm) front mounting plate with flange mounting.

Self-aligning “slam cam” is available for the 050-0850 and 050-1600 latches



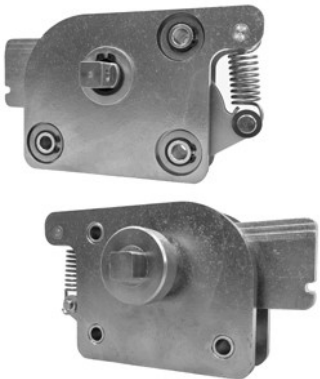
050-1600 TriGuard Heavy Duty Latch

This heavy-duty single rotor latch is designed for medium to heavy-duty vehicle entrance and rear door applications. It features a proven single rotor latch design, high strength 8-gauge (4.2mm) front mounting plate and is retrofittable with competitive single rotor wedge style rotary latches.



140-0100 TriGuard Heavy Duty Cam Lock

This heavy duty cam lock module is designed to be located in high stress areas and used as a primary latching mechanism for securing personnel doors, rear doors, hatches and windows or as a secondary mechanism in conjunction with a primary door latch. Providing additional strength and security, it can be used singularly or in multiples and can be operated and controlled via rods or cables from a central release such as TriMark's 010-1000 Rotating Lever Handle.



Handles

010-1000 Rotating Lever Handle

These exterior and interior door handles are fabricated from high strength plate steel and feature modular attach/quick detach, 1000 hour Cass protection, and soft touch coating.



Push Pull COMMANDoor Interior Handle

The centerpiece of the *COMMANDoor* functionality is the *COMMAND* Handle. By designing a system in which a single control handle's motion coincides with the desired direction of door travel, TriMark has provided the first true Intuitive Motion Control System for the war fighter's ingress and egress from heavily armored vehicles.

010-1100 TriGuard Heavy Duty Rotating L-Handle

This robust rotating L-handle features modular construction that allows for customization, including the use of light weight materials without sacrificing strength. The handle also provides for the use of a padlock for additional security.





030-0850 Flush Mount Paddle Handle

This flush paddle was designed for medium to heavy-duty on-highway vehicle entrance doors and features robust construction, a lock detail that allows for power locking and is compliant to FMVSS 206 (ECE R11) locking requirement.

040-0300 Padlockable Push Button

This handle was specifically designed for off-highway vehicle applications that require a surface mounted exterior push button handle. It offers robust construction and ergonomic function in a rugged engineering grade plastic.



040-0600 TriMount Push Button Handle

The 040-0600 TriMount Push Button Handle was specifically designed for off-highway vehicle applications that require a surface mounted exterior push button handle with 120mm or 163mm mounting pattern.



020-0200 Comfort-Grip Grab Handle

This strong, lightweight and flexible grab handle is manufactured from tough nylon webbing for strength and durability. The molded comfort-grip handle is pliable and can be used in areas where occupants might impact them. They can withstand a load of 400 lbs. and are easily mounted with two bolts. Overall dimensions are 9.0 in. long X 1.25 in. wide.



Hinges/Accessories



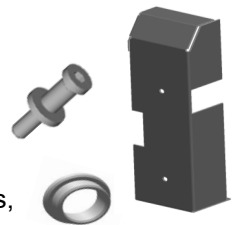
200-0300 Heavy Duty Surface Mount Butt Hinge

This robust surface mounted hinge measures 6 in. high and 5 in. wide, is manufactured out of .50 steel and is duty rated at 2000 lbs. maximum capacity when used as a pair. Featuring heavy construction, a non-removable pin and a choice of CARC finishes, they are well suited for applications such as heavy duty and armored vehicle applications.



Custom versions are also available

TriMark offers a variety of companion components designed to compliment and provide a complete door system including door strikers, rods, power lock actuators, fasteners, bushings, custom covers and weldments.



500 Bailey Avenue
P.O. Box 350
New Hampton, IA 50659
United States
Tel: +1 641 394 3188
Fax: +1 641 394 2392
E-mail: tips@trimarkcorp.com
www.trimarkcorp.com

10002707 QM08 ISO 9001: 2008
10002707 TS09 ISO/TS 16949: 2009

TriMark Corporation

TriMark Europe Limited
Cedar Court
Walker Road
Bardon Hill, Coalville LE67 1TU
United Kingdom
Tel: +44 (0) 1530 512460
Fax: +44 (0) 1530 512461
E-mail: sales@trimarkeu.com
www.trimarkeu.com

427961 QM08 ISO 9001 : 2008
427961 UM ISO 14001 : 2004

TriMark Europe Ltd.